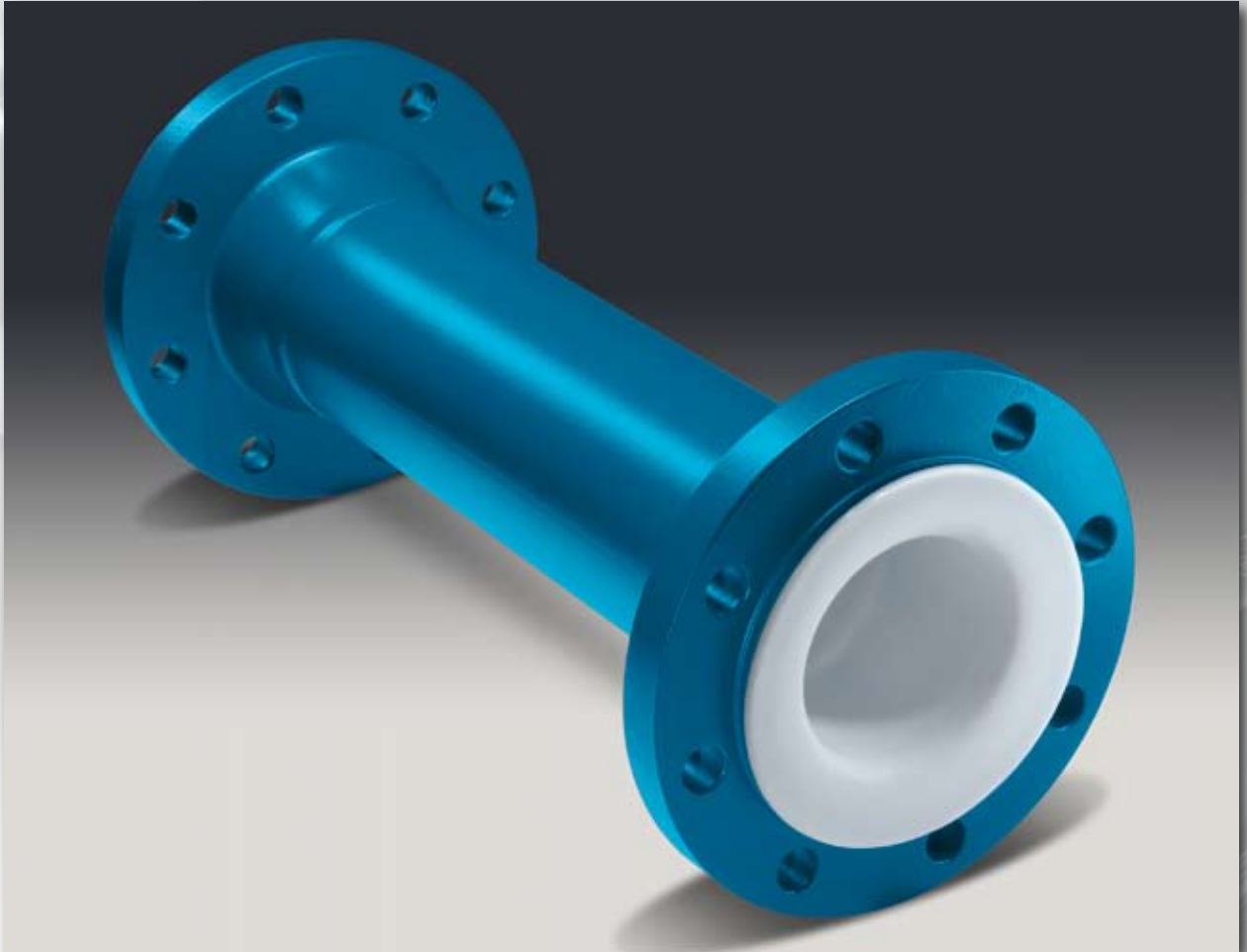


## Pipes (PN 10)

Our pipes are lined, totally stainless, with paste-extruded PTFE and tested fully automatic. We produce pipes up to a length of 6 m.



# Lined Pipes (PN 10)

## Lining-Materials:

- PTFE (virgin or conductive)
- PP (up to diameter nominal DN 300)

Different lining thicknesses on request.

## Flange design:

- fix-loose
- fix-fix
- loose-loose

## Other pressure rates:

- PN 16
- PN 25
- PN 40

Material: carbon steel and stainless steel

Special features: earthing studs, earthing lugs, flange stopper, field flaring pipes, final painting.






DN	L (mm)		d <sub>1</sub> (mm)	d <sub>4</sub> (mm)	K (mm)	a <sub>1</sub> (mm)	a <sub>2</sub> (mm)	Screws	Weights	
	max.	min.							Pipe (ca. kg/m)	Pair of flanges (ca. kg)
15	6000	65	21,3	45	65	19,0	29,0	4 x M 12	1,2	1,5
20	6000	75	26,9	58	75	21,0	33,0	4 x M 12	1,6	2,0
25	6000	75	33,7	68	85	21,0	33,0	4 x M 12	2,5	2,5
32	6000	80	42,4	78	100	21,0	35,0	4 x M 16	3,4	3,6
40	6000	80	48,3	88	110	21,0	35,0	4 x M 16	4,5	4,2
50	6000	90	60,3	102	125	21,0	38,0	4 x M 16	5,8	5,5
65	6000	90	76,1	122	145	21,0	39,0	4 x M 16	7,1	6,6
80	6000	100	88,9	138	160	23,0	39,0	8 x M 16	10,0	8,3
100	6000	100	114,3	158	180	23,0	43,0	8 x M 16	14,0	9,9
125	6000	100	139,7	188	210	26,5	44,5	8 x M 16	17,5	13,2
150	6000	100	168,3	212	240	27,0	49,0	8 x M 20	23,5	16,0
200	6000	120	219,1	268	295	29,0	49,0	8 x M 20	39,0	23,0
250	4000	130	273,0	320	350	31,0	53,0	12 x M 20	55,5	31,0
300	3000	130	323,9	370	400	31,0	53,0	12 x M 20	74,0	39,0
350	3000	130	355,6	430	460	31,0	55,0	16 x M 20	85,0	52,0
400	3000	130	406,4	482	515	31,0	61,0	16 x M 24	102,0	67,0
450	3000	130	457,0	532	565	33,0	65,0	20 x M 24	130,0	85,0
500	3000	140	508,0	585	585	33,0	69,0	20 x M 24	155,0	90,0

DN	Standard	Lining thickness (mm)	possible vacuum		
			23°C	100°C	230°C
25	●	3	Full	Full	Full
		4	Full	Full	Full
40	●	3	Full	Full	Limited
		4	Full	Full	Limited
50	●	3	Full	Full	Limited
		4	Full	Full	Limited
80	●	3	Full	Full	Limited
		4	Full	Full	Limited
100	●	3	Full	Full	Limited
		4,5	Full	Full	Limited
150	●	5	Full	Full	Limited
		6	Full	Full	Limited
200	●	5	Full	Full	Limited
		6	Full	Full	Limited
250	●	5	Full	Full	Limited
		7,5	Full	Full	Limited
300	●	5	Full	Full	Limited
		7,5	Full	Full	Limited

Standard lengths available from stock:  
flange design fix-loose

- L = Total length
- d<sub>1</sub> = External diameter of the pipe
- d<sub>4</sub> = Flaring diameter
- K = Bolt circle
- a<sub>1</sub> = Length with fixed flange (standard lining)
- a<sub>2</sub> = Length with loose flange (standard lining)

**Vacuum resistance:**

-  = full vacuum
-  = limited vacuum
-  = no vacuum

Please refer to the next diameter nominal if your diameter nominal is not listed.